



AUTOMATIC NON-FREEZE VALVE

MODEL NF6

NON-FREEZE DRAIN VALVE OPTION FOR FREE FLOAT STEAM TRAPS

Features

Automatic drain valve for the prevention of steam trap freeze-up. Reliably drains residual condensate from traps equipped with drain plugs.

1. NF6 opens to drain residual condensate shortly after the shut-off of steam-using equipment when steam pressure in the trap decreases to about 0.02 MPaG.
2. NF6 closes steam-tight immediately after start-up of the steam-using equipment when steam pressure in the trap rises to about 0.03 MPaG.
3. The normal operation of the steam trap is unaffected by the NF6.
4. Built-in screen protects valve from clogging.
5. All internal parts are made of stainless steel or brass.



Specifications

Model	NF6	
Connection	Screwed	
Size (mm)	8	
Maximum Operating Pressure (MPaG)	PMO	2.0
Maximum Operating Temperature (°C)	TMO	220
Valve Opening Pressure (MPaG)	approx. 0.02	
Valve Closing Pressure (MPaG)	approx. 0.03	

PRESSURE SHELL DESIGN CONDITIONS (**NOT** OPERATING CONDITIONS): Maximum Allowable Pressure (MPaG) PMA: 2.0 1 MPa = 10.197 kg/cm²
Maximum Allowable Temperature (°C) TMA: 220



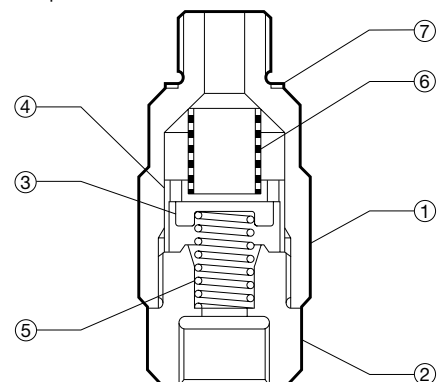
1. Freezing occurs from the outlet side. When installing outlet piping, do not use thin-walled tubing. Use a short, thick-walled pipe discharging to atmosphere.
2. When used in extreme cold, due to the possibility of freezing while discharging, prevention of freezing cannot be guaranteed.



To avoid abnormal operation, accidents or serious injury, DO NOT use this product outside of the specification range. Local regulations may restrict the use of this product to below the conditions quoted.

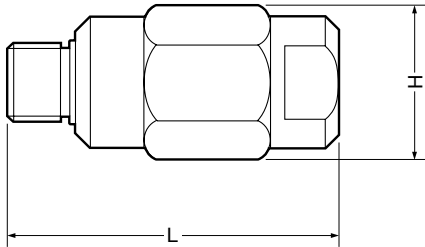
No.	Description	Material	JIS	ASTM/AISI*
①	Body	Brass	C3604	B16 C36000
②	Valve Seat	Stainless Steel	SUS303	AISI303
③	Valve Disc	Stainless Steel	SUS303	AISI303
④	Valve Disc Guide	Brass	C3601	B16 C36000
⑤	Coil Spring	Stainless Steel	SUS304	AISI304
⑥	Screen	Stainless Steel	SUS304	AISI304
⑦	Gasket	Copper	C1100P	B152

* Equivalent



Dimensions

● **NF6** Screwed

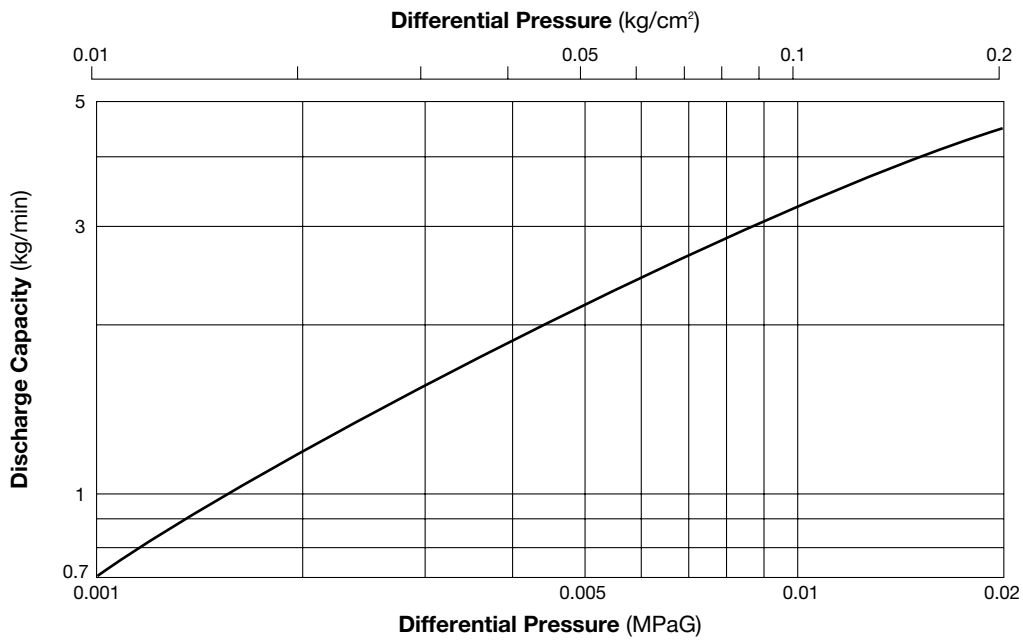


NF6 Screwed* (mm)

Size	L	H	Weight (kg)
8	51	24	0.1

* Thread: inlet G(PF) 1/4 male, outlet G(PF) 1/4 female; other standards available

Discharge Capacity



1. Differential pressure is the difference between the inlet and outlet pressure of the valve.
2. The chart is applicable to condensate below 100°C.



CAUTION The amount of condensate discharged after opening the valve will vary according to the conditions affecting the condensate entering the product.

